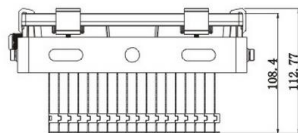
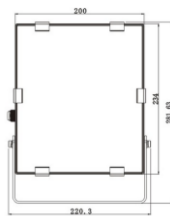
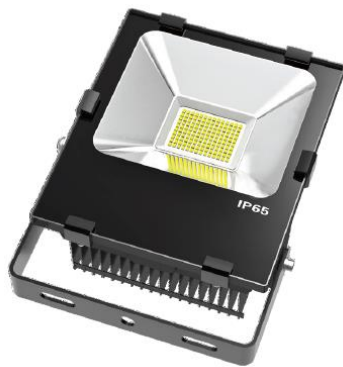


# SUPER FLOODLIGHT 50



## DESCRIPTION

New design LED floodlight with IP65 rated for outdoor usage. Die-cast aluminum housing processed with anodization and 1060 aluminum heat sink with “zipped-fins” technology provide best thermal solution for high power LED. CREE LED chips and OSRAM LED Driver. High efficiency symmetrical aluminum reflector.

## APPLICATION

Hospitality, Commercial, Retail, Office, School

Code	Wattage	Colour Temp	Lumens	Colour
LED43030	50W	5000K	5000lm	Black
LED43035	50W	4000K	5000lm	Black

## TECHNICAL SPECIFICATION

Model	LED Flood Light 50
Finish Colour	Black
Dimensions	200mm x234mm x113mm
Colour Temp	4000K and 5000K
IP Rating	IP65
CRI	80
Beam Angle	120D
Cut out Size	N/A
Power Consumption	50W
Power Factor	>0.90
Lumen of Luminaire	5000lm
Dimmable	Available on request
Life time	Up to 50,000 hrs (L70/B10)

## Available Accessories

Dimmable is available on request

## PHOTOMETRY

IES file is available on request

