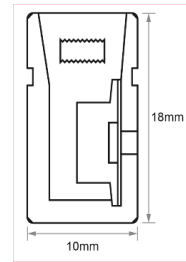
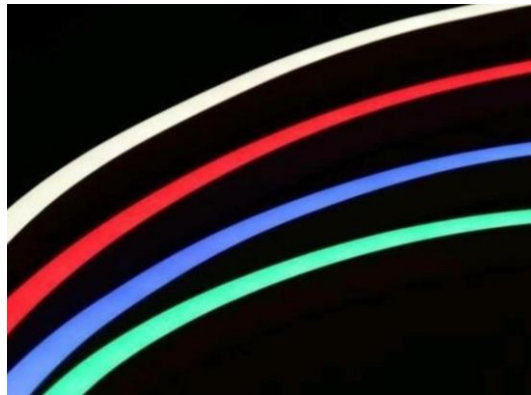


# SNAKE 1018S-RGBW



SVL Lighting

## TECHNICAL SPECIFICATIONS



**24V IP67**

- Horizontal Bending and Side Lighting
- Seamless and uniform light output, DOT-FREE
- DMX512 Compatible
- Robust housing with high quality silicon, UV proof for outdoor application.
- Easy installation with clips and bendable track
- Cut-able for flexible application
- 4 in 1, a variety of colours are achievable
- Extrusion and accessories available

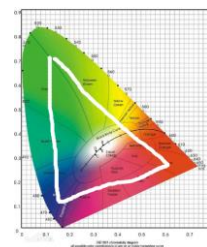
<b>Dimensions:</b>	(W)10mm x (H)18mm
<b>Power (W/M)</b>	15W
<b>Voltage(V):</b>	24V
<b>Lumens per Meter:</b>	50lm-420lm/m
<b>Cutting Increment:</b>	100mm
<b>Colour Temperature:</b>	RGB+W (3K/4K/6K)
<b>Beam Angle:</b>	120°
<b>Working Temperature (°C)</b>	-25~60
<b>Storage Temperature(°C) :</b>	-30~80
<b>Dimmable:</b>	DMX512, DALI, 1-10V

\* IES Files are available on request

### Controllers:

- RGBW Zigbee Remote Controller
- RGBW Touch Controller
- DMX512

Order Code	Wattage	Lumen	Colour Temp
SNAS15RW3-1018	15w	280lm/w	RGB+W3K
SNAS15RW4-1018	15w	280lm/w	RGB+W4K



R – 620nm  
G – 515nm  
B – 460nm

\* Please contact our sales team for specific requirements and order code



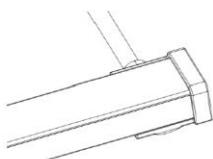
SVL Lighting

TECHNICAL SPECIFICATIONS

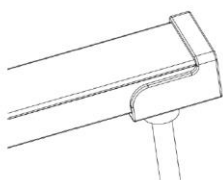
CONNECTORS:

- IP67 Power feed and end cap

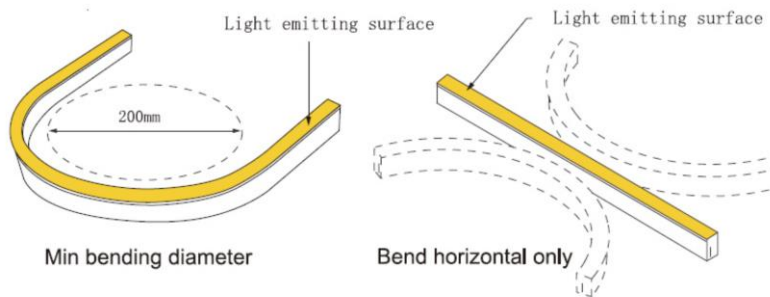
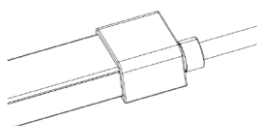
Side feeder



Bottom feeder



End feeder



Aluminium Profile



Stainless Flexible Aluminium Profile

