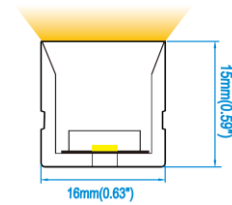


# SNAKE 1615T FLX-CUT

## TECHNICAL SPECIFICATIONS



SVL Lighting



24V

IP67

IK08

- Vertical bending and Top View
- Free-Cutting anywhere, No Dark Zone
- Dual color extrusion, diffused silicone lens and thermal conductive base
- UV and yellowing resistant
- IP67 and salt-mist proof
- Extrusion and accessories are available
- Custom made length
- Ideal for commercial, hospitality and retail applications

<b>Dimensions:</b>	W: 16mm x H: 15mm
<b>Length per roll:</b>	5m
<b>Cutting Increment:</b>	Zero (No restriction)
<b>Voltage:</b>	24VDC
<b>Power:</b>	14.4W/M
<b>Lumens</b>	2700K @ 705lm/m 3000K @ 754lm/m 4000K @ 799lm/m
<b>Trim Colour:</b>	silicone
<b>CRI:</b>	>80/90
<b>Colour Temp:</b>	2700K/3000K/4000K
<b>Power factor:</b>	>0.9
<b>Beam Angle:</b>	120°
<b>Dimmable:</b>	DALI, DMX512, 1-10V
<b>Life Span:</b>	up to 50,000 hrs

\* IES Files are available on request

Order Code	Wattage	Lumen	Colour Temp
SNAT143F-1615	14.4w/m	754lm/w	3000K
SNAT144F-1615	14.4w/m	799lm/w	4000K

\* Please contact our sales team for specific requirements and order code



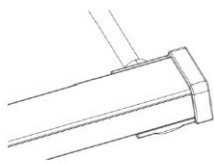
SVL Lighting

TECHNICAL SPECIFICATIONS

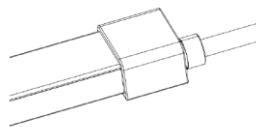
CONNECTORS:

- IP67 Power feed and end cap

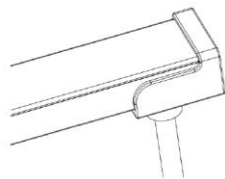
Side feeder



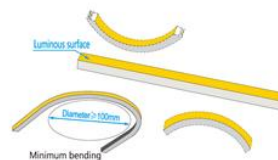
End feeder



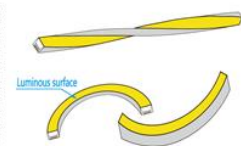
Bottom feeder



Bending Diagram



Correct bending direction and bending radius



Do not twist it or bending reversely

